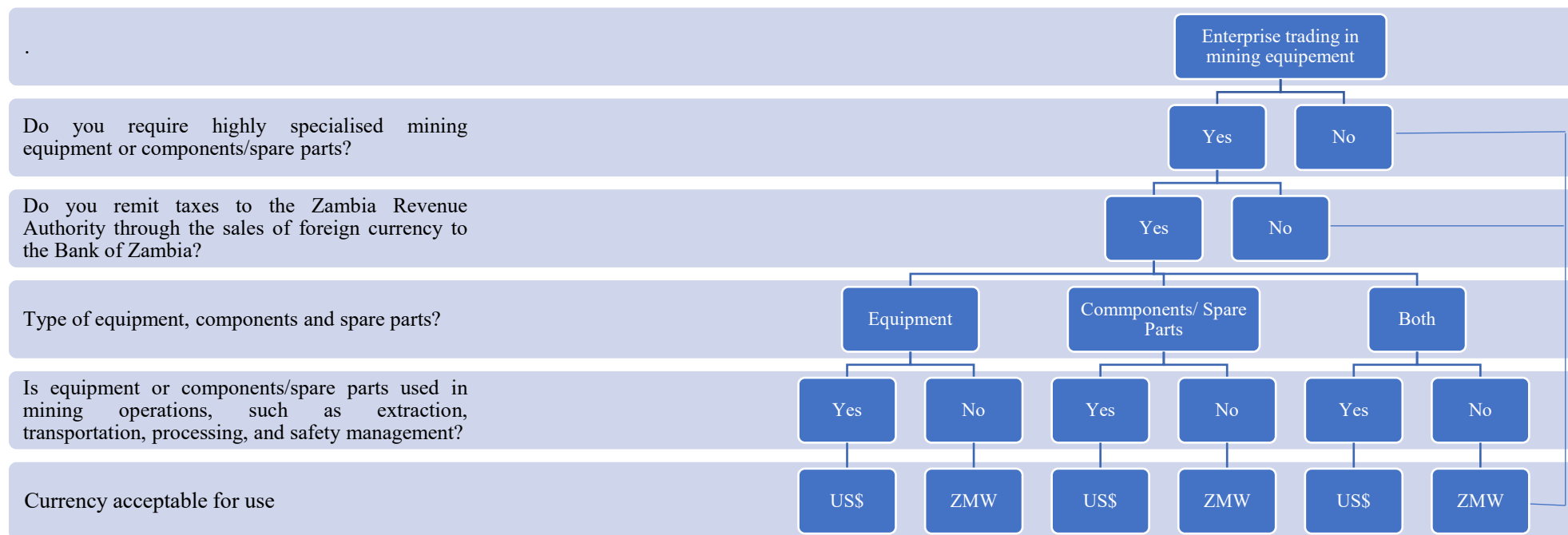


Currency Directives Decision Tree for Specialised Mining Equipment



A. Mining Specialised equipment:

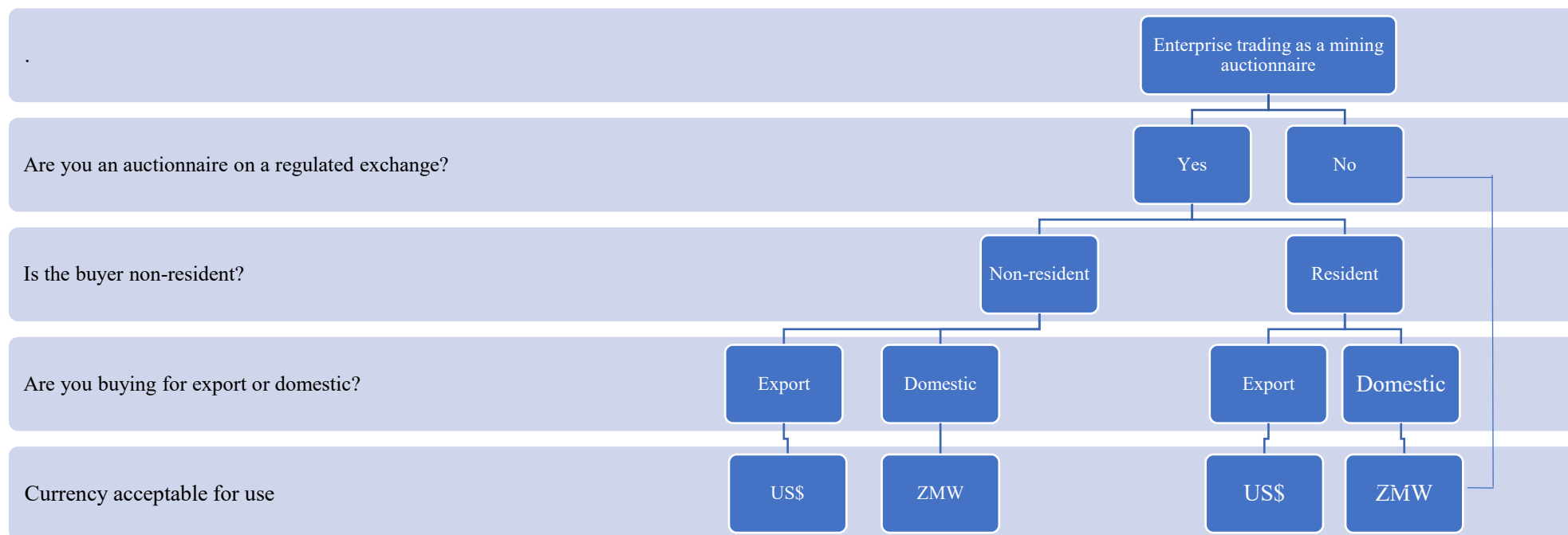
1. Dump Trucks
2. Bulldozers
3. Draglines
4. Jaw Crushers
5. Mining Drill Rigs
6. Wheel Loaders
7. Mining Excavators

8. Motor Graders
9. Wheel Tractor Scrapers
10. Explosives

B. Spare Parts/Components for mining Specialised equipment:

1. Mining tyres for heavy-duty equipment
2. Spare parts for heavy-duty equipment

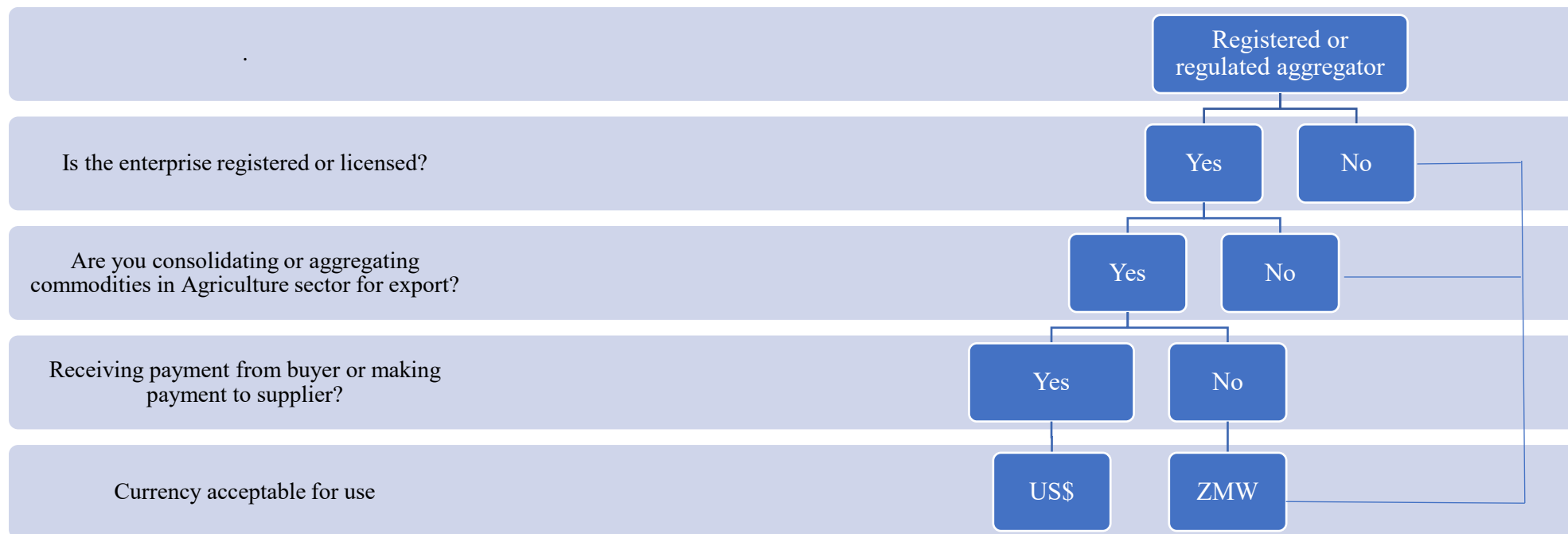
Currency Directives Decision Tree for Mining Sector (Precious stones and metals)



A. Mining auctions precious stones and metals:

1. Gemstones
2. Gold
3. Emeralds

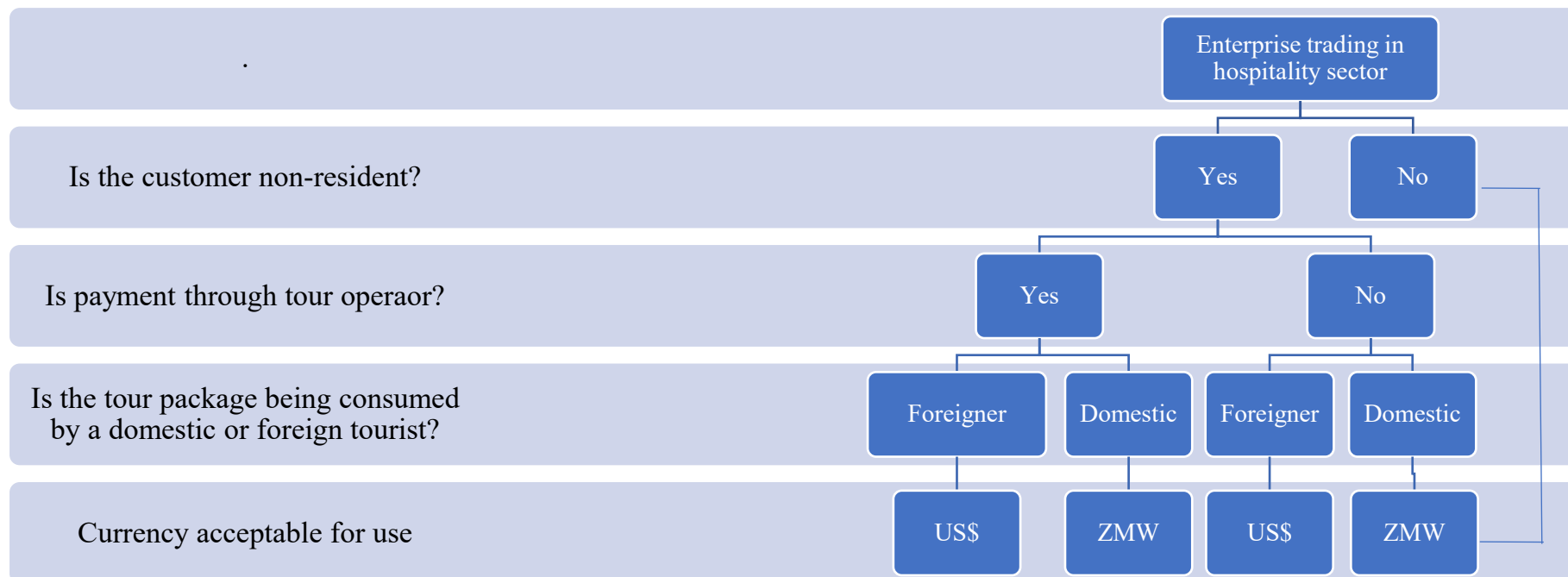
Currency Directives Decision Tree for Agriculture Sector (Aggregators and Auctioneers)



A. Commodities for agriculture sector:

1. Coffee
2. Beef
3. Avocados
4. Tobacco

Currency Directives Decision Tree for Tourism



A. Enterprises in hospitality sector:

1. Hotel
2. Lodge
3. Tour operators